



EMF CDO 1.0.0 Ganymede Simultaneous Release

May 18th, 2008

EMF CDO - Ganymede Release Talking Points



- Noteworthy New Features:
 - ◆ Network transfer of only deltas of changes ([201266](#))
 - ◆ Partial loading of collections ([201265](#))
 - ◆ Hibernate integration server-side ([217117](#))
- Quality of APIs
 - ◆ No “provisional” APIs, all non-API code in “internal” packages
- End of Life Issues:
 - ◆ None
- IP Issues:
 - ◆ None
- Committer Diversity
 - ◆ Second committer for Hibernate integration
 - ◆ Third committer election in progress



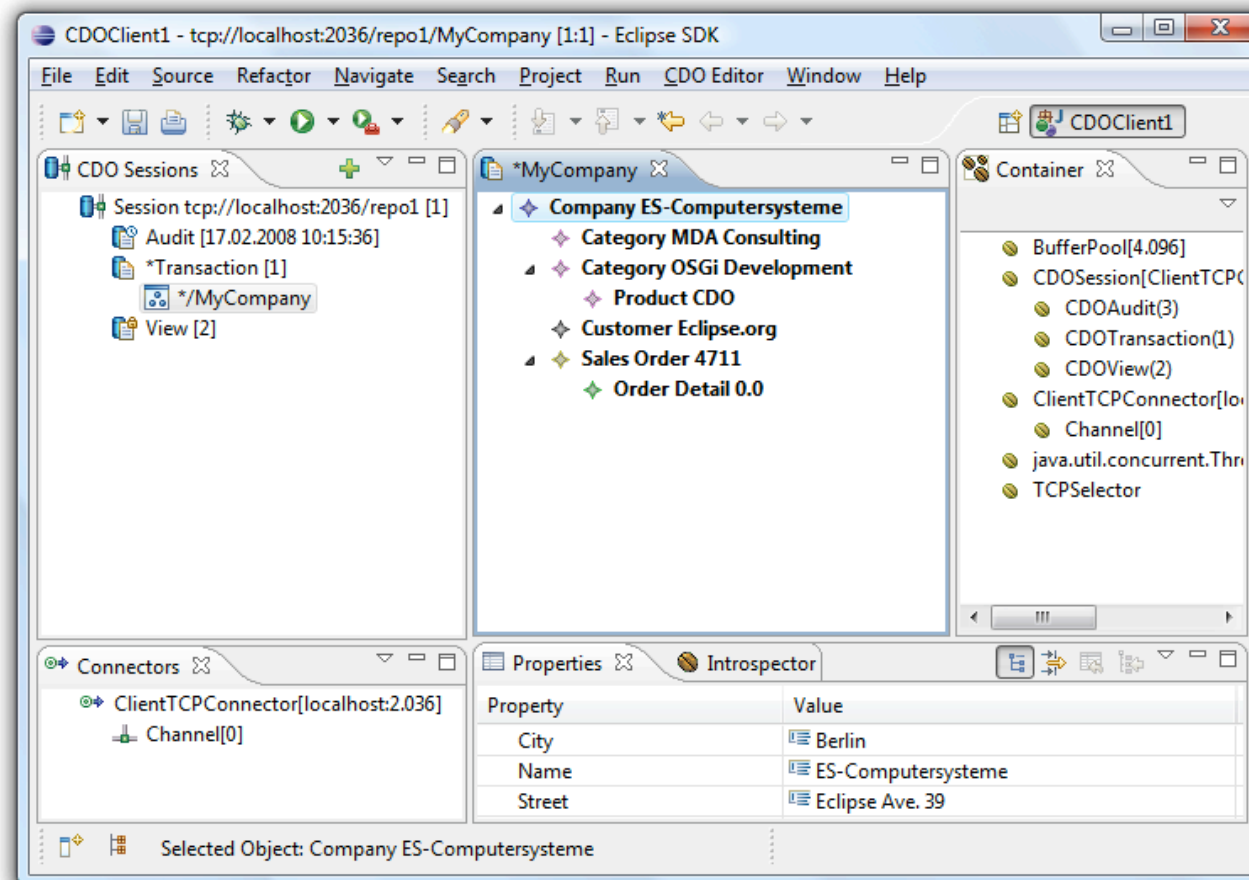
EMF CDO - Connected Data Objects The EMF Model Repository

- Provides distributed shared models for EMF
- Overcomes all the issues with XML files
- Integrates with the EMF persistence framework
- Uses Net4j to implement a network protocol
- Supports multiple repositories on the server
- Connects with heterogeneous back ends
- Uses OSGi™ at client and server side (optional)



EMF CDO - Connected Data Objects

The EMF Model Repository





Features & Non-Code Aspects

- Features
 - ◆ New features regularly announced via release notes
 - ◆ 70 enhancements provided since 0.7.0
- Non-Code Aspects
 - ◆ New example for server configuration with Spring Framework™
 - ◆ Wiki with tutorials and design docs: <http://wiki.eclipse.org/CDO>



APIs

- No “provisional” APIs; all non-API code in “internal” packages
- Deprecated API
 - ◆ None
- No ‘discouraged access’ warnings (internal usage)
- 2 x 98 JUnit tests (MEMStore + HibernateStore)

Standards, Architectural Details, UI Usability



- Standards
 - ◆ Support for standard EMF (and the standards supported by EMF)
- Architectural Details
 - ◆ Requires a 5.0 JVM™ or greater
 - ◆ Client based on EMF 2.4
 - ◆ Server with exchangeable backends (JDBC™, Hibernate™, ...)
 - ◆ Can run standalone (No OSGi), on OSGi and Eclipse
- UI Usability
 - ◆ As a pure runtime technology all UIs are only exemplary



Schedule

- CDO is a “+2” component in the simultaneous release
- 1.0 Release Plan according to the Ganymede schedule
- CDO uses a continuous build approach

Bugzilla



- As of May 18th, 2008:

	NEW/ASSIGNED/REOPENED	RESOLVED/VERIFIED/CLOSED	Total
blocker		6	6
critical		3	3
major		11	11
normal	9	29	38
minor		4	4
trivial		1	1
enhancement	18	70	88
Total	27	124	151



Communities

- Active newsgroup
 - ◆ eclipse.technology.emft
- Conference Participation
 - ◆ Long Talk at EclipseCon 2008



IP Issues

- The CDO component leadership verifies that
 - ◆ The about files and use licenses are in place as per the Guidelines to Legal Documentation.
 - ◆ All contributions (code, documentation, images, etc) have been committed by individuals who are either Members of the Foundation, or have signed the appropriate Committer Agreement. In either case, these are individuals who have signed, and are abiding by, the Eclipse IP Policy.
 - ◆ All significant contributions have been reviewed by the Foundation's legal staff.
 - ◆ All non-Committer code contributions, including third-party libraries, have been documented in the release and reviewed by the Foundation's legal staff.



IP Issues

- The CDO component leadership verifies that (cont.)
 - ◆ All Contribution Questionnaires have been completed.
 - ◆ The "provider" field of each plug-in is set to "Eclipse.org".
 - ◆ The "copyright" field of each feature is set to the copyright owner (the Eclipse Foundation is rarely the copyright owner).
 - ◆ Any third-party logos or trademarks included in the distribution (icons, help file logos, etc) have been licensed under the EPL.
 - ◆ Any fonts or similar third-party images included in the distribution (e.g. in PDF or EPS files) have been licensed under the EPL.
 - ◆ IP Log at
 - <http://www.eclipse.org/modeling/emft/project-info/ipquery.php>
 - <http://www.eclipse.org/modeling/emf/project-info/ipquery.php>



Project Plan

- A draft development plan for CDO 2.0.0 is not yet available
- Important planned features
 - ◆ Extensible remote queries (SQL, OCL, ...)
 - ◆ JPA support (Java Persistence API)
 - ◆ XA support (distributed transactions)
 - ◆ Support for save points



Graduation: Active Community

- Integration with both EMF and Teneo
- Active Community (> 600 newsgroup posts per year)
- Complete redesign and rewrite ~ 1 year ago
- 124 bugzillas filed and solved



Graduation: Open and Transparent

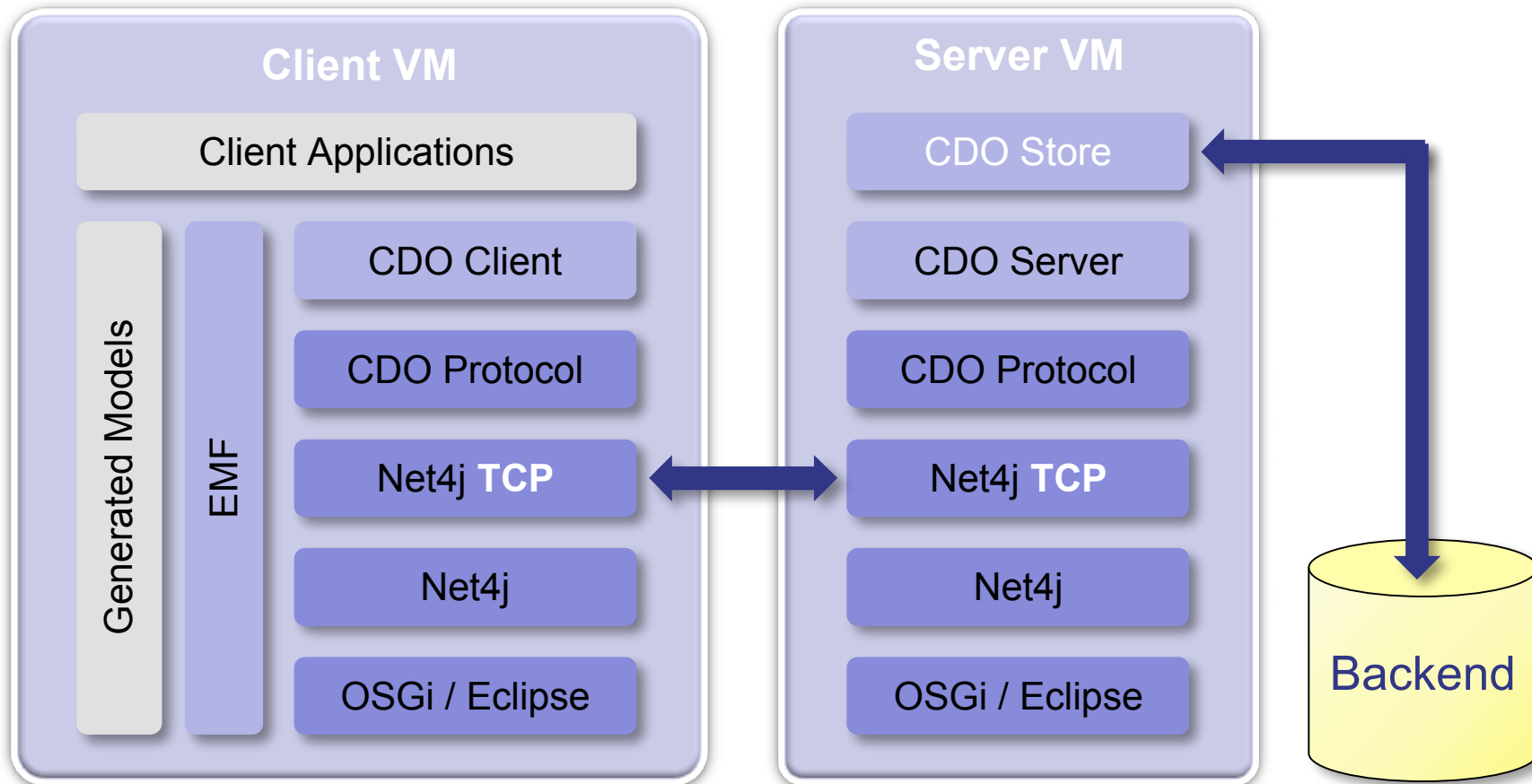
- Very responsive support on newsgroup, open discussions and reactions on proposals from users
- All core bugzillas solved immediately
- Project Materials are all available to the public
- Follow IP-policy (approval for use of derby jar files, for example)



Graduation Review: The Eclipse Way

- Long talk on EclipseCon 2008 (ESE 2008 planned)
- Integrates with other Eclipse projects: EMF, Teneo
- Frequent/Continuous builds (every 1-2 weeks)
- Every build solves all outstanding core bugs
- Builds are automatically tested in multiple scenarios, test cases run with different databases

Graduation Review: Technical Architecture





Legal Notices

- OSGi is a trademark of the OSGi Alliance
- XML is a trademark of the World Wide Web Consortium; marks of W3C are registered and held by its host institutions MIT, ERCIM, and Keio
- Java, JVM, JDBC and all Java-based trademarks are trademarks of Sun Microsystems, Inc. in the United States, other countries, or both
- Hibernate is a registered trademark of Red Hat, Inc.
- Other company, product, or service names may be trademarks or service marks of others